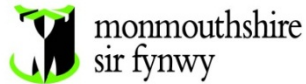


Public Document Pack



Neuadd y Sir
Y Rhadyr
Brynbuga
NP15 1GA

County Hall
Rhadyr
Usk
NP15 1GA

Tuesday, 15 January 2019

Notice of Reports Received following Publication of Agenda.

Lower Wye Area Committee

Wednesday, 23rd January, 2019 at 10.00 am,
Chepstow Leisure Centre - Chepstow

Attached are reports that the committee will consider as part of the original agenda but were submitted to democratic services following publication of the agenda.

Item No	Item	Pages
8.	Catchment Review	1 - 54

Paul Matthews
Chief Executive

This page is intentionally left blank



CONSULTATION DOCUMENT

Review of Secondary School catchment
areas in Monmouthshire

Consultation period:

18th January 2019 to 1st March 2019

Contents

1. Introduction	3
2. Your views matter	3
3. Consultation requirements	4
4. Consultation with children and young people	4
5. Consultation arrangements - Key Dates	4
6. How will your views be considered	5
7. Background to the review of school catchment areas.....	5
8. Current provision across Monmouthshire	6
9. Why do we have School Catchment Areas?.....	7
10. Aims of the catchment area review	7
11. Transitional Arrangements.....	8
12. Secondary School Catchments - Identified issues	8
13. Areas considered under this review	9
14. Finance	9
Appendix 1 - Map showing Secondary School Catchment Areas.....	10
Appendix 2 - List of Primary Schools	11
Appendix 3 - List of Consultees	12

1. Introduction

This consultation document is an opportunity for consultees and other interested parties to learn about some proposed changes to secondary school catchment areas within the County of Monmouthshire. The proposed changes form part of the review of the School admission arrangements that are proposed to be implemented for the 2020/21 academic year.

The consultation provides you with an opportunity to ask questions, make comments, and share your views on the proposals put forward. Your input into this consultation will be considered carefully when the Council considers whether the proposals should be taken forward to implementation.

Please note that the information contained within this document should be considered in conjunction with the draft school admission policy 2020/21, which is available to view / download at www.monmouthshire.gov.uk

2. Your views matter

Your views on the proposed changes to secondary school catchment areas are important to us. We really do want you to engage in this consultation and tell us what you think of the proposals, particularly if they may affect you or your children.

Important: This consultation will not make any assumptions, so whether you are for or against the proposed changes, please take this opportunity to have your say

You can tell us what you think by:

- 1) Attending one of the consultation sessions:

Review Area	Date	Venue
Goytre and surrounding areas	5 th February 2019 at 6pm	Goytre Fawr Primary School
Trellech and surrounding area	12 th February 2019 at 6pm	Trellech Primary School
Llandogo and surrounding area	18 th February 2019 at 6pm	Llandogo Primary School
Usk and surrounding area	20 th February 2019 at 6pm	Usk Church in Wales Primary School
All areas day time drop in session	14 th February 2019 9.30am to 11.30am	County Hall, Usk

- 2) Completing the online response form available via www.monmouthshire.gov.uk or

- 3) Contacting the Access Unit on 01633 644508, by emailing accesstolearning@monmouthshire.gov.uk or by post to @innovation House, Wales 1, Caldicot, NP26 9AN

Please note that the deadline for responses to this consultation is 1st March 2019 at 5pm. Any responses received by the local authority after this closing date will not be considered as part of this consultation.

3. Consultation requirements

The School Admissions Code Wales (July 2013), Local Authorities must consult on the admission arrangements for those schools for which it is the admissions authority. Where changes to existing arrangements are proposed, including school catchment areas, consultation must be undertaken with those likely to be affected by the proposals.

The Council is required to undertake this consultation by 1st March 2019 and determine the outcome of the proposals by 15th April 2019 should it wish to implement the proposals for September 2020 onwards.

4. Consultation with children and young people

The views of children and young people are extremely important to the Council and therefore children and young people will be provided with opportunities to contribute to this consultation process. The Council will engage with children and young people considered to be affected by these proposals and ensure that their views are captured and considered in any reports that determine our way forward.

5. Consultation arrangements - Key Dates

Consultation stage	
Task	Key Dates
Consultation commences	18 th January 2019
Consultation ends (6 weeks)	1 st March 2019

Consideration stage	
Task	Key Dates
Consultation report published by	27 th March 2019
Cabinet consider results of consultation and agree on how to proceed	3 rd April 2019

Implementation stage
September 2020

6. How will your views be considered

The Council will develop a consultation report incorporating all of the responses received from consultees by the consultation closing date. The consultation report will be made available for all consultees to view.

It is this consultation report that will be considered by the County Council's Cabinet informing a decision on whether any of the proposals should be implemented. So if you have a view, whether you support the proposals or not, please share them with us prior to the closing date.

Alongside your views, the Cabinet will consider the financial implications of the proposals prior to making a decision on whether they should be implemented. However, at this stage of the consultation we want to know what you think.

7. Background to the review of school catchment areas

The majority of catchment areas within Monmouthshire have been in place in their current form since the reorganisation of local government in 1996, and it is thought that they have been in place for many years prior to this. In many cases the catchment areas do not seem to follow a specific rationale, they are not in all cases based on nearest school and they do not in all cases follow transition arrangements. Some primary school catchment areas also show trends of regular overpopulation.

A review of School Catchment Areas was last undertaken in 2015. The local authority entered into a formal consultation to seek views on the proposed changes to secondary school catchment areas, however, the significance of the proposed

changes led to a Cabinet decision to re-engage in a more intensive consultation with the Monmouthshire community prior to implementing any changes.

In February 2018, the Council adopted a new corporate plan that sets out the 22 priorities to be completed by 2022. A review of school catchment areas has been identified within the corporate plan as one of the priorities to be revisited.

This consultation document starts this review with a particular focus on Secondary School catchment areas, with a review of Primary School catchment areas to follow.

8. Current provision across Monmouthshire

Secondary Schools

The County of Monmouthshire is geographically comprised of four in county Secondary School catchment areas serving in the region of 4644 children and young people from years 7 to 13. Our Secondary school estate consists of:

- King Henry VIII Comprehensive School in the Northwest
- Monmouth Comprehensive School in the Northeast
- Chepstow School in the East
- Caldicot School in the Southeast

Some areas of Monmouthshire also fall within a catchment area for a school that falls outside of the County border:

- Caerleon Comprehensive School in the Southwest

A map detailing the Secondary School catchment areas can be found under appendix 1.

Primary Schools

The Primary School estate is comprised of 30 Primary Schools supporting around 6315 children and young people. The structure of our Primary school estate includes:

- Two Welsh Medium Primary Schools, one located in the North and one located in the South of the County.
- Two Voluntary Aided Roman Catholic Primary Schools, one located in the North and one located in the South of the County.
- Two Voluntary Aided Church in Wales Primary Schools, both located in the South of the County.
- Four Voluntary Controlled Church in Wales Primary schools, three located in the North of the County and 1 located in central Monmouthshire.

A full list of Monmouthshire Primary Schools can be found under appendix 2

Each of the above Primary Schools offers its own designated catchment area, with the exception of our two Roman Catholic Primary Schools. It is understood that St Marys VA RC Primary serves the South of the County, whilst Our Lady and St Michaels RC Primary School serves the North of the County. However, these arrangements are not formally supported through designated catchment areas.

9. Why do we have School Catchment Areas?

The catchment area of a school is significant for the following reasons:

- School catchment areas are in place to help support the assessment and determination of school places. Children and Young People that reside within the catchment area for a designated school currently receive a priority for school places in the event that the preferred school is oversubscribed.
- Whilst parents are not obliged to apply for their children to attend their designated catchment school, having catchment areas is useful as a guide for parents to understand which school generally serves their immediate community.
- Catchment areas play a key part in ensuring adequate provision of school places within a designated area.
- Catchment areas are linked to the entitlement to free home to school transport in line with the County Council's current Home to School Transport Policy. If a pupil attends their catchment on nearest available school and lives over 2 miles from that school (Secondary) or 1.5 miles (Primary), they are entitled to free transport.

Under the Learner Travel (Wales) Measure 2008 Local Authorities have a Statutory Duty to provide transport to the nearest suitable school, if over 2 miles for primary and 3 miles for Secondary.

10. Aims of the catchment area review

The majority of catchment areas across the county have been in place for a significant amount of time and lack rationale and reasoning. The review thus far has identified the following overarching aims when reviewing primary and secondary school catchment areas:

- To address the current position whereby some areas of the County do not fall within the catchment area for a Monmouthshire school.

- Where possible, to align Primary and Secondary School catchment areas to support transitional arrangements.
- Where possible, to address areas whereby the catchment school is not necessarily the nearest school.
- To seek to address any imbalances within existing school catchment areas to ensure robust arrangements for the planning for school places.
- To review school catchment areas through the ongoing development of school reorganisation proposals.

Whilst the above form the council's overarching aims for this catchment area review, it's recognised that they cannot be applied in all cases due to the geography and rurality of our County.

11. Transitional Arrangements

Section 198 of the Education Act 2002 imposes a requirement upon the Governing Bodies of maintained Secondary schools and Primary schools to collaboratively draw up Transition Plans. A Primary school is only formally linked to the Secondary school that receives the majority of its year 6 leavers.

There are certain points of transition when the learning progress of pupils is more likely to dip. Transition from the Primary to the Secondary phase in school is a particularly vulnerable stage. For many young people, the move often leads to a downturn in achievement. As part of the effort to help smooth this transition, strong partnerships have been developed between Secondary schools and their feeder cluster Primary schools

12. Secondary School Catchments - Identified issues

A review of secondary school catchment areas has been agreed to be the Council's first stage of a countywide review of school catchment areas that will take place between now and 2022. In line with our overarching aims that underpin this review, our secondary school catchment areas present the following challenges:

- Some areas within the Monmouthshire County do not fall within the catchment area for one of our four secondary schools.
- There are Primary School catchment areas that do not align in their entirety with the catchment area for the feeding secondary school.
- Some areas have been identified as being within a Secondary School catchment area which is not their closest Monmouthshire School.

At this stage of the review, the Council has identified four main areas of the County to be reviewed as part of this consultation, and now seeks your input on some of the suggestions that have been put forward.

As a reminder, this consultation is the start of the ongoing review of school catchment areas. The Council will further engage with identified areas as it seeks to bring forward further proposals.

13. Areas considered under this review

Review area 1 – Village of Goytre and immediate surrounding areas

Review area 2 – Town of Usk and immediate surrounding areas

Review area 3 – Village of Trellech and immediate surrounding areas

Review area 4 – Village of Llandogo and immediate surrounding areas

14. Finance

The aims of this stage of the catchment area review are not financially driven. However, a full cost analysis looking at the financial impacts of each proposal will be undertaken alongside this consultation, paying particular attention to the impact on the Monmouthshire schools affected by these proposals, as well as the impact on home to school transport costs.

A full cost analysis will be presented to the Council's Cabinet alongside the views received as part of this consultation, to determine whether or not proposals should be implemented.

Appendix 1 - Map showing Secondary School Catchment Areas



Appendix 2 - List of Primary Schools

CLUSTER	SCHOOL
Caldicot	Archbishop Rowan Williams CIW Primary
Caldicot	Castle Park Primary
Abergavenny	Cantref Primary
Monmouth	Cross Ash Primary
Abergavenny	Deri View Primary
Caldicot	Destow Primary
Caldicot	Durand Primary
Abergavenny	Gilwern Primary
Abergavenny	Goytre Fawr Primary
Monmouth	Kymin View Primary
Monmouth	Llandogo Primary
Abergavenny	Llanfoist Fawr Primary
Abergavenny	Llantilio Pertholey CIW Primary
Abergavenny	Llanvihangel Crucorney Primary
Caldicot	Magor CIW Primary
Monmouth	Osbaston CIW School
Abergavenny	Our Lady & St Michaels RC Primary
Monmouth	Overmonnow Primary
Chepstow	Pembroke Primary
Monmouth	Raglan CIW VC Primary
Caldicot	Rogiet Primary
Chepstow	Shirenewton Primary
Chesptow	St Mary's RC Primary
Chesptow	The Dell Primary
Chepstow	Thornwell Primary
Monmouth	Trellech Primary
Caldicot	Undy Primary
Monmouth	Usk CIW Primary
Abergavenny	Ysgol Gymraeg Y Fenni
Caldicot	Ysgol Gymraeg Y Ffin

Appendix 3 - List of Consultees

The governing body of the relevant schools

- Governing bodies of All secondary schools in Monmouthshire
 - Caldicot School
 - Chepstow School
 - King Henry VIII Comprehensive School
 - Monmouth Comprehensive School
- Governing bodies of any other secondary schools affected by the proposals:
 - Caerleon Comprehensive School
- Governing bodies of Primary Schools affected by the proposals:
 - Llandogo Primary School
 - Trellech Primary School
 - Goytre Fawr Primary School
 - Usk Church in Wales Primary School

Neighboring Local Authorities affected by the proposals

- Newport City Council
- Gloucestershire County Council
- Herefordshire County Council

Parents of Children Likely to be affected

- Monmouthshire Parents of pupils living in the affected areas with children on roll in Nursery to Year 5

Other key parties

- Members of the School Admission Forum
- County Councillors
- Ward Members for the affected areas



Review Area 1
Goytre Village & the Surrounding
Areas

Consultation period:

18th January 2019 to 1st March 2019

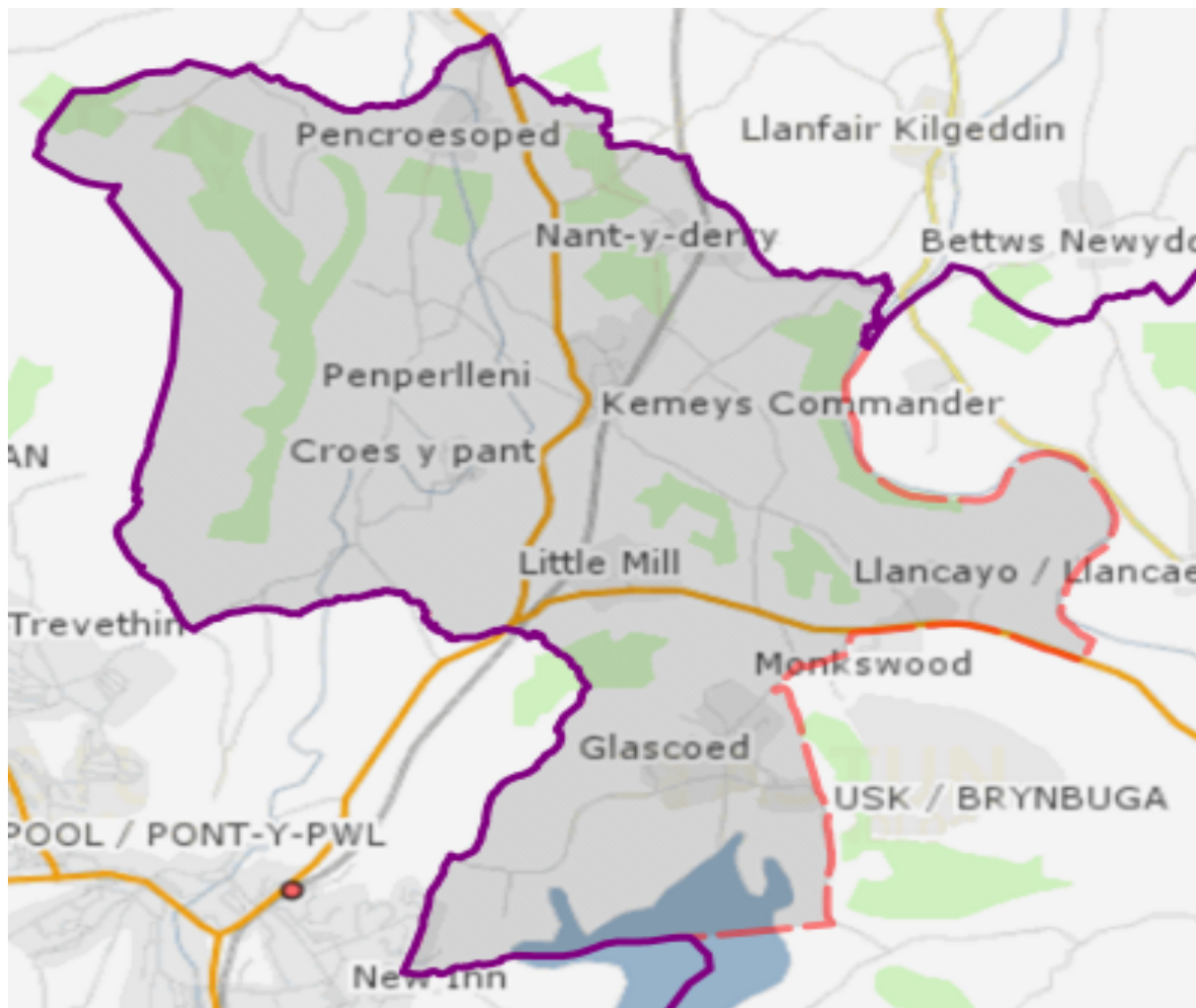
Contents

1.	The Proposal	3
2.	The current position	4
3.	Why are we considering the proposed change?.....	6
4.	Background information.....	7
5.	Advantages and Disadvantages of the proposal	8
6.	Financial Implications	9
7.	What Next?	9

1. The Proposal

The Council are considering amending the secondary school catchment area for children and young people currently residing within the village of Goytre and the immediate surrounding areas. The main areas affected by this proposal are Goytre, Penperlleni, Nantyderry, Little Mill, Monkswood, Llancayo, Kemys Commander and Glascoed.

The areas identified currently form part of the catchment area for Goytre Fawr Primary School, and Caerleon Comprehensive School. The map below illustrates the areas that are being considered under this proposal, and will help you to understand whether you could be affected by the proposed changes



The Council would like to know your views on whether the secondary school catchment boundary should be amended for the specified areas (shaded area above), to form part of the catchment area for King Henry VIII Comprehensive School, thus enabling children and young people to continue their education through a Monmouthshire education system.

Alternatively, the Council would like to know your views on whether the status quo should continue, i.e. Caerleon Comprehensive School remaining as the designated catchment school for the affected area.

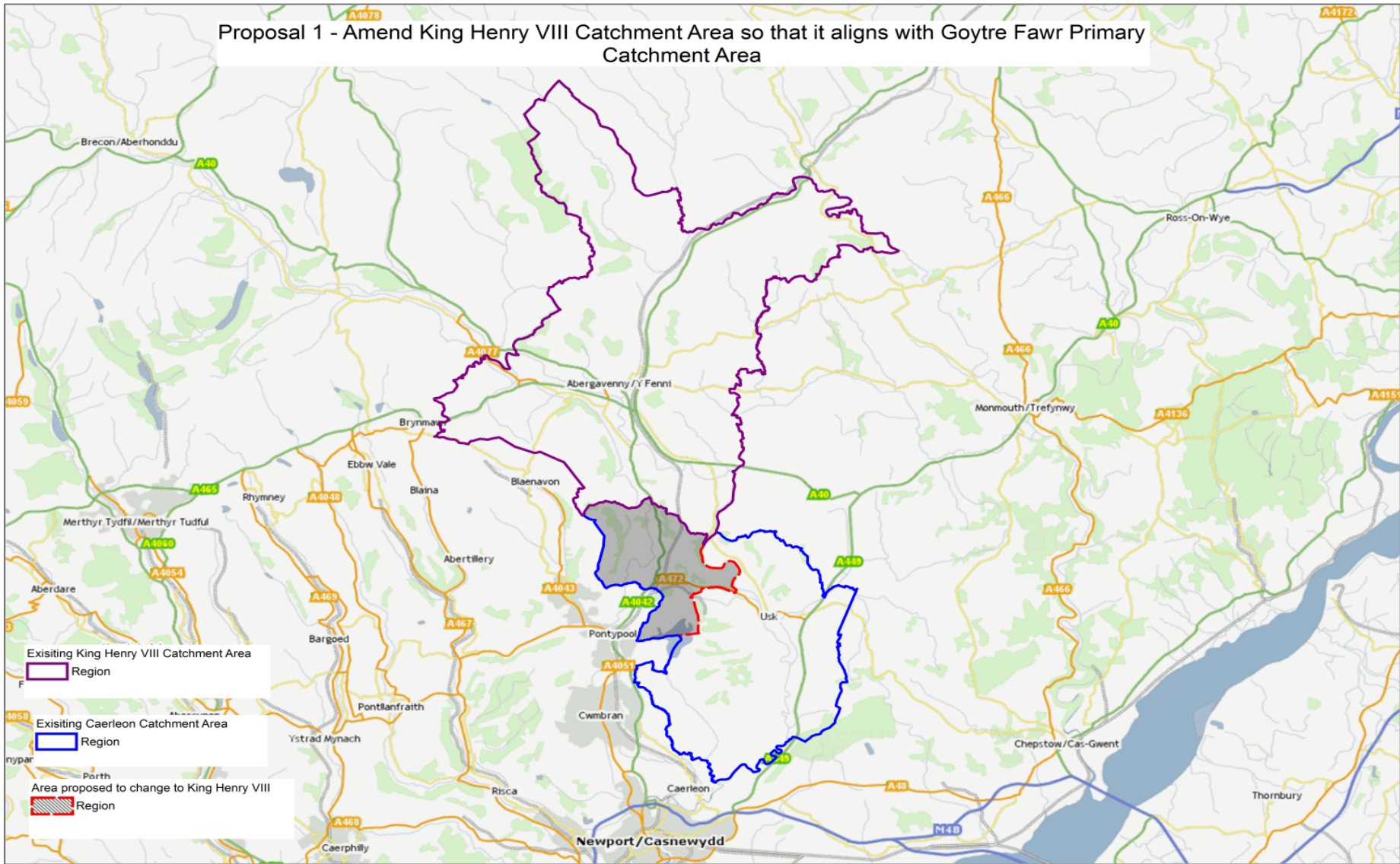
The proposals would see the provision of free home to school transport offered to King Henry VIII Comprehensive School as the newly designated catchment school. Only those currently residing in the affected areas and currently on roll at Caerleon Comprehensive would continue to receive home to school transport to Caerleon Comprehensive

2. The current position

The area under review forms part of the catchment area for Goytre Fawr Primary School. Goytre Fawr Primary School is located in the county of Monmouthshire and is considered as a designated feeder school for King Henry VIII Comprehensive School, however, its catchment area serves more than 1 secondary school:

- 1) **Caerleon Comprehensive School**. Situated in the City of Newport and forms the secondary catchment school for the majority of children and young people that reside within the Goytre Fawr Primary catchment area.
- 2) **King Henry VIII Comprehensive School**. Situated in Abergavenny, Monmouthshire and forms the secondary catchment school for a small number of children and young people that reside within the Goytre Fawr Primary catchment area. King Henry also forms the nearest Monmouthshire Secondary school for the majority of the affected area.
- 3) **West Monmouth School**. Situated in Pontypool, Torfaen, and forms the nearest school for the majority of children and young people that reside within the catchment area for Goytre Fawr Primary School.

The map overleaf illustrates the current position, identifying how the area under review relates to existing secondary school catchment areas. For clarity, the shaded area of this map currently forms part of the catchment area for Caerleon Comprehensive School, but is proposed to form part of King Henry VIII Comprehensive School.



3. Why are we considering the proposed change?

No designated secondary catchment school within Monmouthshire.

One of the identified aims of our catchment review was to consider the areas of Monmouthshire that do not currently have a designated Secondary catchment School that falls within Monmouthshire. The secondary catchment school is presently one that falls within the city of Newport, and is not one that is considered to be the nearest school. The proposed changes to the affected areas would allow children resident in Monmouthshire to access a secondary school that is within the county in which they live.

Transitional arrangements between Primary and Secondary School.

Goytre Fawr Primary School is the designated primary school for the affected area and is a feeder school for King Henry VIII Secondary School. The proposed changes would see complete alignment between the catchment area for Goytre Fawr Primary School and King Henry VIII Secondary school, lending support to the existing transitional arrangements, and enabling the cohorts of children to remain together when entering into that daunting transition between Primary to Secondary School.

Access to School places

The parents of children and young people currently residing within the affected area have the opportunity to express a preference for a school at which they wish for their child to attend. This preference does not need to be for the designated catchment school, however, children residing within the catchment area for a preferred school receive a priority in the event of oversubscription.

Those residing within the affected area are not afforded with the above priority for a Monmouthshire School as they do not have a designated secondary catchment school within the county in which they live. The proposals would address this matter.

Provision of Home to School Transport

A further consideration of the proposed change is the current provision for home to school transport that currently serves the affected area. The council's current policy provides free home to school transport to the nearest or catchment school if residing 2 miles or more from the home address.

The affected area sees home to school transport provision offered to multiple secondary schools for some of those children and young people residing in affected area, dependent on parental preference:

- **Caerleon Comprehensive School** as the designated catchment school for most of the affected areas, although not considered to be the nearest school.
- **West Monmouth School** as the nearest school for the majority of the affected area
- **King Henry VIII School** – discretionary transport on the basis of being the nearest Monmouthshire Secondary School serving parts of the affected area.

The offer of transport to multiple secondary schools is financially unsustainable and would be addressed through these proposals.

4. Background information

An analysis of parental requests made over the last 5 years show that the vast majority of children and young people attending Goytre Fawr Primary School opt to transition to either King Henry VIII or Caerleon Comprehensive Schools. The table below provides the numbers transitioning to each of the secondary schools from Goytre Fawr Primary over the last 5 years.

	Transition to King Henry VIII	Transition to Caerleon Comprehensive
September 2014	19	8
September 2015	9	9
September 2016	17	9
September 2017	18	4
September 2018	16	4
Total	79	34

The numbers in the above table are children and young people that have previously attended Goytre Fawr Primary School, and demonstrates that most seek admission into King Henry VIII Comprehensive School, which in the majority of cases is not the designated catchment school.

Projected Numbers on roll

The table below identifies the number of children that are currently residing within the affected area and therefore those most likely to be affected by the proposed change. The numbers identify the children that will transition from Primary to Secondary school between September 2020 and September 2025.

Current NCY	Primary to Secondary transition	Number of Pupils Affected
Year 5	Sep-20	29
Year 4	Sep-21	35
Year 3	Sep-22	18
Year 2	Sep-23	17
Year 1	Sep-24	28
Reception	Sep-25	18
	Total	145

The Council's projected numbers on roll for King Henry VIII Comprehensive school support that the above children could be accommodated should the proposals be supported and agreed.

Pupils currently on roll at Caerleon Comprehensive School.

Children and Young People who are currently on roll at Caerleon Comprehensive School will not be affected by these proposals and existing home to school transport arrangements will remain in place until they are no longer attending the school.

5. Advantages and Disadvantages of the proposal

Advantages	Disadvantages
The proposals are supporting Monmouthshire children attending Monmouthshire Schools	Families residing within the affected area would be removed from the catchment area for Caerleon Comprehensive should proposals be agreed.
Families residing within the affected area would have a designated catchment school within the county in which they live	Children and Young People from within the affected area can apply for a school place at Caerleon Comprehensive should they wish. However, there is an increased risk that their application will be unsuccessful as they would then be considered to be an out of catchment applicant.
School catchment areas form part of the oversubscription criteria used to award school places. Children and young people from the affected area would gain an advantage in obtaining a school place at a Monmouthshire school	Only children residing within the affected area that are already on roll at Caerleon Comprehensive School will continue to receive free home to school transport. Any new requests will not be entitled from September 2020.

should they form part of the catchment area.	
Children and young people residing within the affected area would meet the criteria to receive free home to school transport to a Monmouthshire School.	Some parts of the affected area are slightly closer in distance to Caerleon Comprehensive than King Henry Comprehensive. Therefore, travel distances for some may increase.
The number of schools to which the council currently provides free home to school transport would reduce	
Enabling the above would support the robust transition links between Goytre Fawr Primary and King Henry VIII, enabling peer groups to remain together on transition to secondary school.	

6. Financial Implications

The aims of this proposal are not are not financially driven, but to enable Monmouthshire children and young people to continue their education at a Monmouthshire Secondary School. However, a full cost analysis looking at the financial impacts of the proposal will be undertaken alongside this consultation, paying particular attention to the impact on the Monmouthshire schools affected by the proposal, as well as the impact on home to school transport costs.

A full cost analysis will be presented to the Council's Cabinet alongside the views received as part of this consultation, to determine whether the proposal should be implemented.

7. What Next?

Your views on the proposed changes to secondary school catchment areas are important to us. We really do want you to engage in this consultation and tell us what you think of the proposals, particularly if they may affect you or your children.

Important: This consultation will not make any assumptions, so whether you are for or against the proposed changes, please take this opportunity to have your say

You can tell us what you think by:

- 1) Attending one of the drop in sessions:

Review Area	Date	Venue
Goytre and surrounding areas	5 th February 2019 at 6pm	Goytre Fawr Primary School

All areas day time drop in session	14 th February 2019 9.30am to 11.30am	County Hall, Usk
------------------------------------	---	------------------

- 2) Completing the online response form available via www.monmouthshire.gov.uk or
- 3) Contacting the Access Unit on 01633 644508, by emailing accesstolearning@monmouthshire.gov.uk or by post to @innovation House, Wales 1, Caldicot, NP26 9AN

Please note that the deadline for responses to this consultation is 1st March 2019 at 5pm. Any responses received by the local authority after this closing date will not be considered as part of this consultation.



Review Area 2 Usk Town & the Surrounding Areas

Consultation period:

18th January 2019 to 1st March 2019

Contents

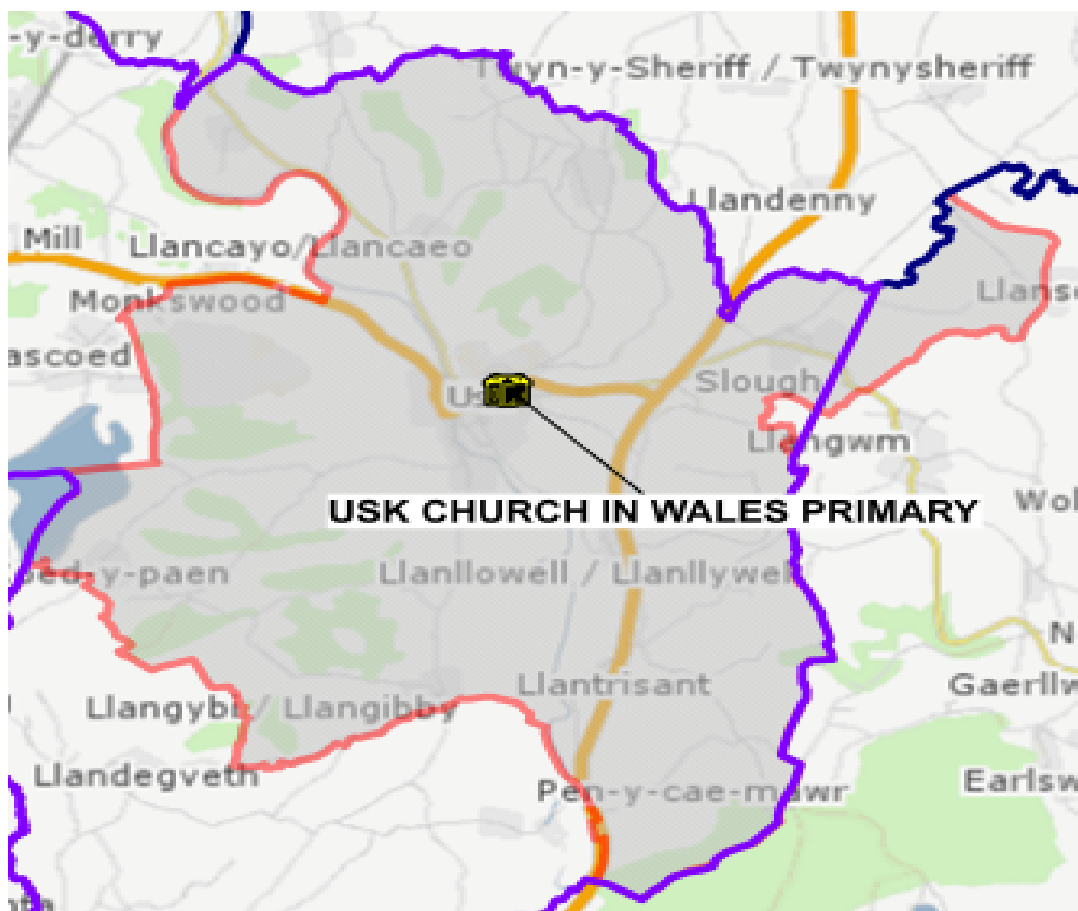
1. The Proposal	3
2. The Current Position	4
3. Why are we considering the proposed change?.....	6
4. Background information	7
5. Advantages and Disadvantages of the proposal.....	9
6. Financial Implications	10
7. What Next?.....	10

1. The Proposal

The Council are considering amending the secondary school catchment area for children and young people currently residing within the town of Usk and the immediate surrounding areas.

The areas identified as being affected by these proposals currently form part of the catchment area for Usk Church in Wales Primary School. The Secondary catchment area at large is designated to Caerleon Comprehensive School, with a small pocket in the area of Llansoy designated to Chepstow School.

The map below illustrates the areas that are being considered under this proposal, and will help you to understand whether you could be affected by the proposed changes.



The Council would like to know your views on whether the secondary school catchment boundary should be amended for the specified areas (shaded area above), to form part of the catchment area for Monmouth Comprehensive School, thus enabling children and young people to continue their education through a Monmouthshire education system.

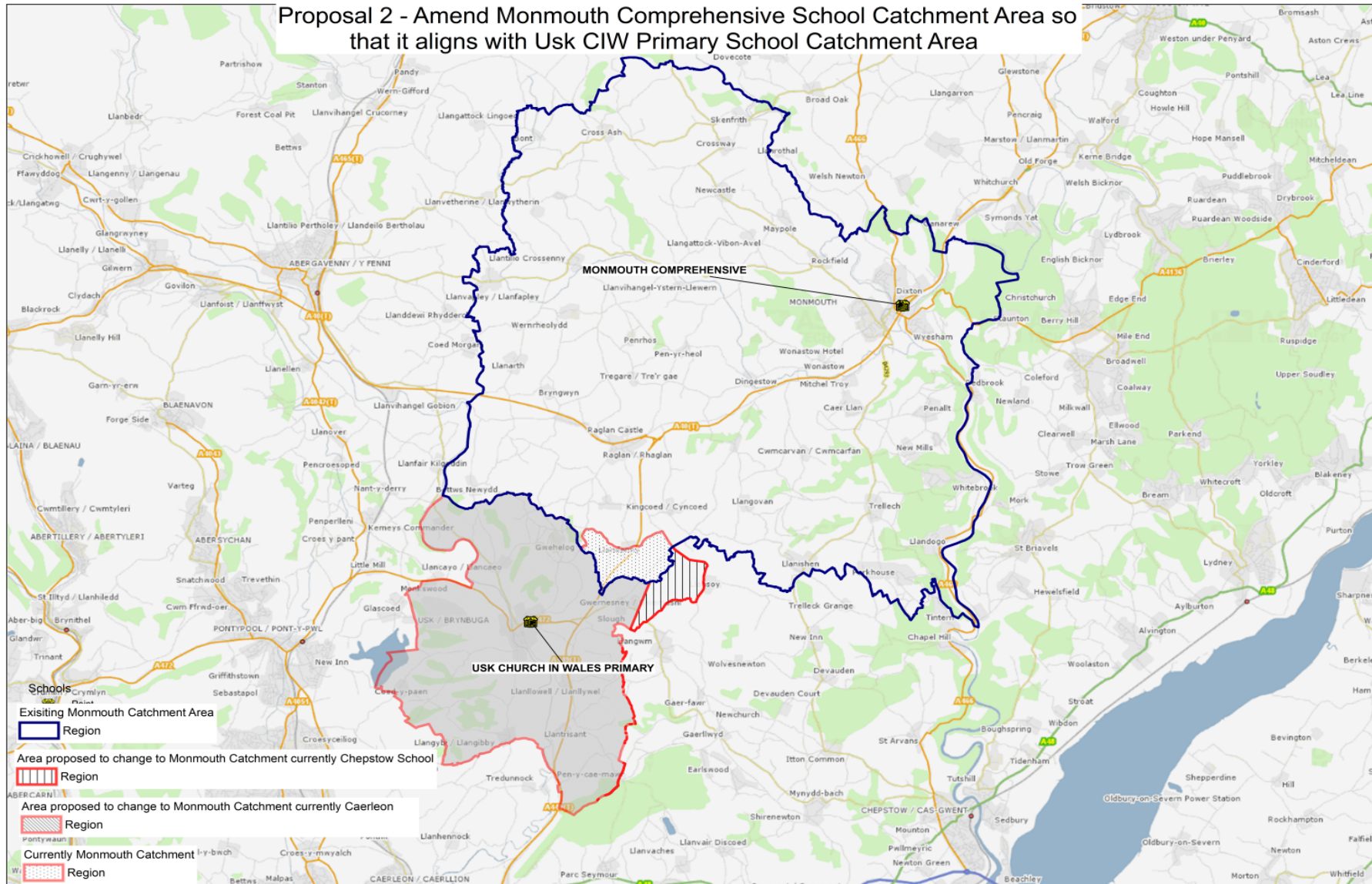
Alternatively, the Council would like to know your views on whether the status quo should continue, i.e. Caerleon Comprehensive School remaining as the designated catchment school for the affected area.

2. The Current Position

The area under review as part of this consultation forms part of the catchment area for Usk Church in Wales Primary School. Usk Church in Wales Primary School is located in the county of Monmouthshire and is considered to be a designated feeder school for Monmouth Comprehensive School, however, its catchment area serves more than 1 secondary school:

- Caerleon Comprehensive School. Situated in the City of Newport and forms the secondary catchment and nearest school for the majority of children and young people that reside within the Usk Church in Wales Primary School catchment area.
- Chepstow Comprehensive School. Situated in Chepstow, Monmouthshire and forms the secondary catchment school for a small number of children and young people that reside within the Usk Church in Wales Primary catchment area. Chepstow School also forms the nearest Monmouthshire Secondary school for a small proportion of the affected area.
- Monmouth Comprehensive School. Situated in Monmouth and forms the nearest Monmouthshire school for the majority of children and young people that reside within the catchment area for Usk Church in Wales Primary School.

The map overleaf illustrates the current position, identifying the area under review and the Secondary school catchments in their current form. For clarity, the shaded area of this map current forms part of the catchment area for Caerleon Comprehensive School / Chepstow School but is proposed to form part the catchment area for Monmouth Comprehensive School under these proposals



3. Why are we considering the proposed change?

No designated secondary catchment school within Monmouthshire.

One of the identified aims of our catchment review was to consider the areas of Monmouthshire that do not currently have a designated Secondary catchment School that falls within Monmouthshire. The secondary catchment school is presently one that falls within the city of Newport. The proposed changes to the affected areas would allow children resident in Monmouthshire to access a secondary school that is within the county in which they live.

Transitional arrangements between Primary and Secondary School.

Usk Church in Wales Primary School is the designated primary school for the affected area and is a feeder school for Monmouth Comprehensive School. The proposed changes would see complete alignment between the catchment area for Usk Church in Wales Primary School and Monmouth Comprehensive school, lending support to the existing transitional arrangements, and enabling the cohorts of children to remain together when entering into that daunting transition between Primary to Secondary School.

Access to School places

The parents of children and young people currently residing within the affected area have the opportunity to express a preference for a school at which they wish for their child to attend. This preference does not need to be for the designated catchment school, however, children residing within the catchment area for a preferred school receive a priority in the event of oversubscription.

Those residing within the affected area are not afforded with the above priority for a Monmouthshire school as they do not have a designated secondary catchment school within the county in which they live.

Monmouth Comprehensive School is the nearest Monmouthshire school for the majority of children and young people residing within the affected area. Parental preference together with the feedback from residents of the affected community suggest that there is a keen interest for their children to remain within the Monmouthshire education system as they transition to Secondary School.

Over recent years, the Council has experienced an increasing number of application requests for children and young people from within the affected area to attend Monmouth Comprehensive School. Many of these applications have been unsuccessful at times of oversubscription due to the area not forming part of the catchment area for the preferred school. It has also been suggested that many

parents would apply for a place at Monmouth Comprehensive school if they felt their application would have a high chance of being successful.

The proposals outlined would help in addressing this matter.

Provision of Home to School Transport

A further consideration of the proposed change is the current provision for home to school transport that currently serves the affected area. The council's current policy provides free home to school transport to the nearest or catchment school if residing 2 miles or more from the home address.

The majority of affected area sees home to school transport provision offered to Caerleon Comprehensive School only, as this is both the nearest and catchment school. There is no free home to school transport entitlement for children and young people residing within the affected area that wish to attend a Monmouthshire Secondary School.

Should the proposals be supported and agreed, it would see free home to school transport becoming available to those in the affected area to Monmouth Comprehensive as the newly formed catchment school

4. Background information

An analysis of parental requests made over the last 5 years show that the vast majority of children and young people attending Usk Church in Wales Primary School opt to transition to either Monmouth or Caerleon Comprehensive Schools. The table below provides the numbers transitioning to each of the secondary schools from Usk Church in Wales Primary over the last 5 years.

	Transition to Monmouth Comprehensive	Transition to Caerleon Comprehensive
September 2014	9	10
September 2015	8	21
September 2016	10	16
September 2017	12	24
September 2018	9	20
Total	48	91

The numbers within the above table are children and young people that have been on roll at Usk Church in Wales Primary School, and shows that the majority seek admission into Caerleon Comprehensive School, which in the majority of cases is the designated catchment school.

However, the above does not reflect children that have been unsuccessful in their applications for Monmouth Comprehensive School due to oversubscription issues. The above also doesn't reflect recent feedback received by the council confirming

that more families wish to attend Monmouth Comprehensive School, however, they do not feel their applications will be successful.

The Council is now seeking formal feedback through this consultation on whether parents would wish for their children to remain within the Monmouthshire education system through Primary to Secondary transition.

Projected Numbers on roll

The table below identifies the number of children that are currently residing within the affected area and therefore those most likely to be affected by the proposed change. The numbers identify the children that will transition from Primary to Secondary school between September 2020 and September 2025.

Current NCY	Transition from Primary to Secondary	Number of Pupils Affected
Year 5	Sep-20	31
Year 4	Sep-21	27
Year 3	Sep-22	29
Year 2	Sep-23	35
Year 1	Sep-24	36
Rec	Sep-25	33
	Total	191

The Council's projected numbers on roll for Monmouth Comprehensive school support that the above children could be accommodated should the proposals be supported and agreed. However, there is an increasing risk of children and young people from the affected area not obtaining places should the status quo remain.

Pupils currently on roll at Caerleon Comprehensive School.

Children and Young People who are currently on roll at Caerleon Comprehensive School will not be affected by these proposals and existing home to school transport arrangements will remain in place until they are no longer attending the school.

5. Advantages and Disadvantages of the proposal

Advantages	Disadvantages
The proposals are supporting Monmouthshire children attending Monmouthshire Schools	Families residing within the affected area would be removed from the catchment area for Caerleon Comprehensive should proposals be agreed.
Families residing within the affected area would have a designated catchment school within the county in which they live	Children and Young People from within the affected area can apply for a school place at Caerleon Comprehensive should they wish. However, there is an increased risk that their application will be unsuccessful as they would then be considered to be an out of catchment applicant.
School catchment areas form part of the oversubscription criteria used to award school places. Children and young people from the affected area would gain an advantage in obtaining a school place at a Monmouthshire school should they form part of the catchment area.	Free home to school transport would only be provided to Caerleon Comprehensive school to those children and young people currently on roll, or in the instance that Caerleon Comprehensive is the nearest school.
Children and young people residing within the affected area would meet the criteria to receive free home to school transport to a Monmouthshire School.	Caerleon Comprehensive school is the nearest school for the majority of the affected area. Therefore, travel distances for some may increase, although travelling times are felt to be relatively similar
Enabling the above would support the robust transition links between Usk Church in Wales Primary and Monmouth Comprehensive, enabling peer groups to remain together on transition to secondary school.	

6. Financial Implications

The aims of this proposal are not are not financially driven, but to enable Monmouthshire children and young people to continue their education at a Monmouthshire Secondary School. However, a full cost analysis looking at the financial impacts of the proposal will be undertaken alongside this consultation, paying particular attention to the impact on the Monmouthshire schools affected by the proposal, as well as the impact on home to school transport costs.

A full cost analysis will be presented to the Council's Cabinet alongside the views received as part of this consultation, to determine whether the proposal should be implemented.

7. What Next?

Your views on the proposed changes to secondary school catchment areas are important to us. We really do want you to engage in this consultation and tell us what you think of the proposals, particularly if they may affect you or your children.

Important: This consultation will not make any assumptions, so whether you are for or against the proposed changes, please take this opportunity to have your say

You can tell us what you think by:

- 1) Attending one of the consultation sessions:

Review Area	Date	Venue
Usk and surrounding area	20 th February 2019 at 6pm	Usk Church in Wales Primary School
All areas day time drop in session	14 th February 2019 9.30am to 11.30am	County Hall, Usk

- 2) Completing the online response form available via www.monmouthshire.gov.uk or
- 3) Contacting the Access Unit on 01633 644508, by emailing accesstolearning@monmouthshire.gov.uk or by post to @innovation House, Wales 1, Caldicot, NP26 9AN

Please note that the deadline for responses to this consultation is 1st March 2019 at 5pm. Any responses received by the local authority after this closing date will not be considered as part of this consultation.



Review Area 3

Trellech Village & the Surrounding Areas

Consultation period:

18th January 2019 to 1st March 2019

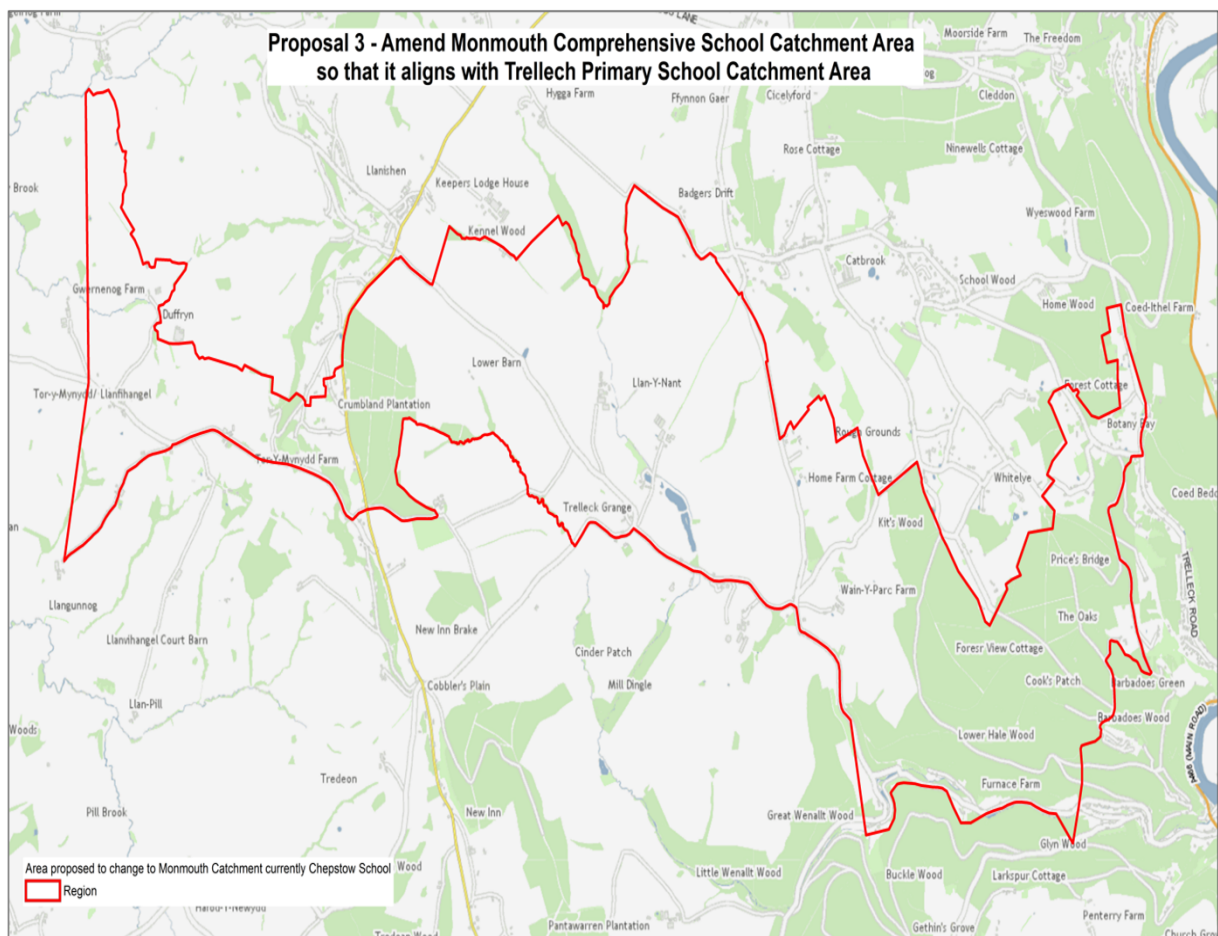
Contents

1. The Proposal	3
2. The current position	4
3. Why are we considering the proposed change?.....	6
4. Background information.....	7
5. Advantages and Disadvantages of the proposal	8
6. Financial Implications	9
7. What Next?	9

1. The Proposal

The Council are considering amending the secondary school catchment area for children and young people currently residing within the village of Trellech and the immediate surrounding areas.

The areas identified currently form part of the catchment area for Trellech Primary School, and Chepstow School. The map below illustrates the areas that are being considered under this proposal, and will help you to understand whether you could be affected by the proposed changes



The Council would like to know your views on whether the secondary school catchment boundary should be amended for the specified areas (area identified above), to form part of the catchment area for Monmouth Comprehensive School, thus aligning the entire catchment area for Trellech Primary to a single secondary school.

Alternatively, the Council would like to know your views on whether the status quo should continue, i.e. Chepstow School remaining as the designated catchment school for the affected area.

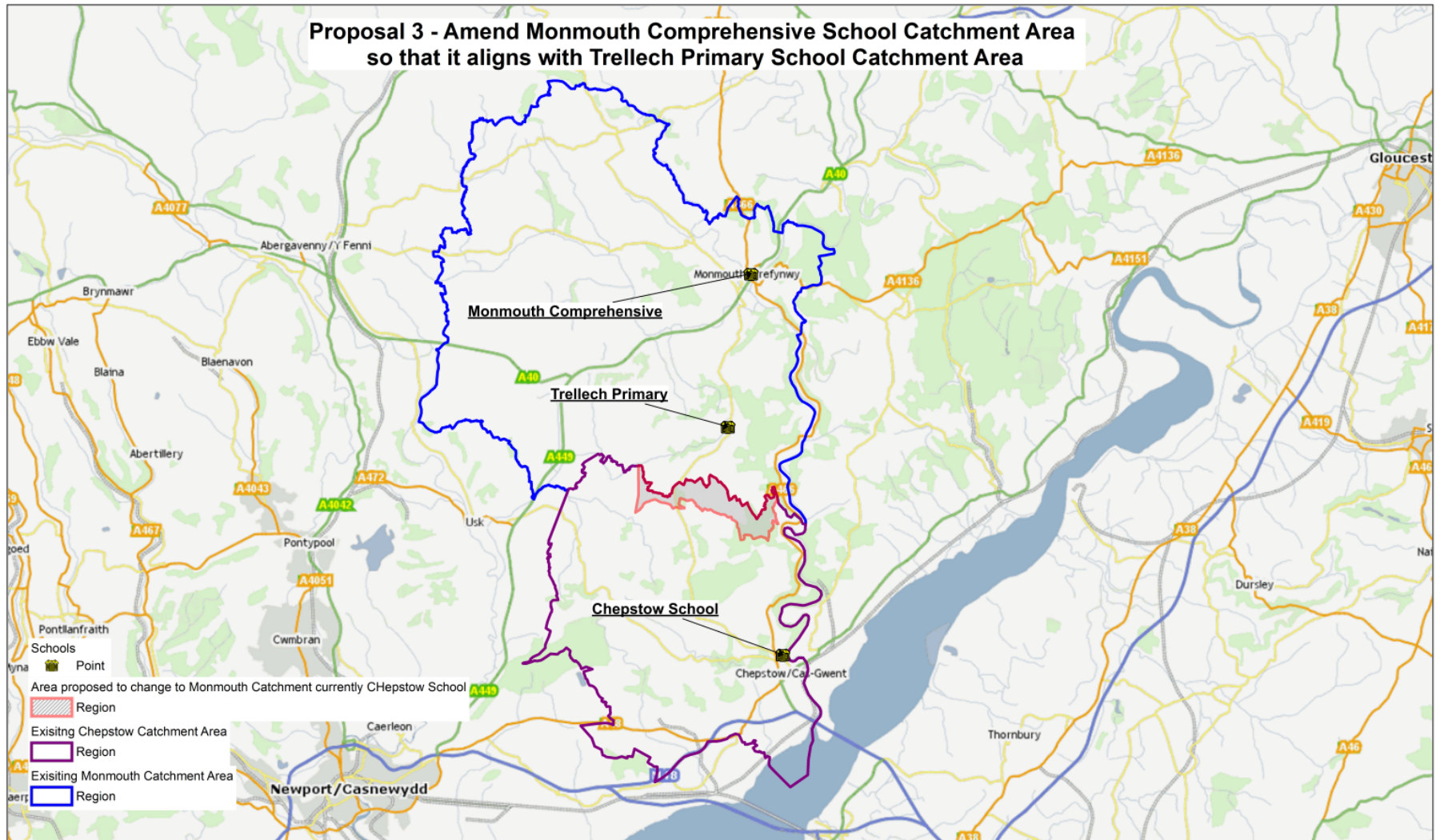
The proposals would see the provision of free home to school transport offered to Monmouth Comprehensive School as the newly designated catchment school. School transport may also be offered to Chepstow School in the event that it is identified to be the nearest school.

2. The current position

The area under review forms part of the catchment area for Trellech Primary School. Trellech Primary School is located in the county of Monmouthshire and is considered as a designated feeder school for Monmouth Comprehensive School, however, its catchment area serves more than 1 secondary school:

- 1) **Monmouth Comprehensive School**. Forms the secondary catchment school for the majority of children and young people that reside within the Trellech Primary catchment area.
- 2) **Chepstow School**. Forms the secondary catchment school for the affected area and is also the nearest school in most instances for those residing within the affected area.

The map overleaf illustrates the current position, identifying how the area under review relates to existing secondary school catchment areas. For clarity, the shaded area of this map current forms part of the catchment area for Chepstow School, but is proposed to form part of Monmouth Comprehensive School.



3. Why are we considering the proposed change?

Transitional arrangements between Primary and Secondary School.

Trellech Primary School is the designated primary school for the affected area and is a feeder school for Monmouth Comprehensive School. The proposed changes would see complete alignment between the catchment area for Trellech Primary School and Monmouth Comprehensive school, lending support to the existing transitional arrangements, and enabling the cohorts of children to remain together when entering into that daunting transition between Primary to Secondary School.

Access to School places

The parents of children and young people currently residing within the affected area have the opportunity to express a preference for a school at which they wish for their child to attend. This preference does not need to be for the designated catchment school, however, children residing within the catchment area for a preferred school receive a priority in the event of oversubscription.

Those residing within the affected area are not afforded with the above priority for Monmouth Comprehensive school as they do not currently form part of the designated catchment area.

Trellech Primary School, being a feeder for Monmouth Comprehensive School, sees almost all of the children and young people residing within its catchment area wishing to transition to Monmouth Comprehensive School. However, some children and young people from Trellech Primary have been unsuccessful in securing places at Monmouth Comprehensive School during times of oversubscription. This is due to the affected area being outside of the catchment area for Monmouth Comprehensive School.

The above results in some children and young people not being able to transition to Monmouth Comprehensive school with their peer groups.

The proposals outlined would help in addressing this matter.

Provision of Home to School Transport

A further consideration of the proposed change is the current provision for home to school transport that currently serves the affected area. The council's current policy provides free home to school transport to the nearest or catchment school if residing 2 miles or more from the home address.

The affected area sees the availability of free home to school transport being available to Chepstow School as the nearest / catchment school for the affected area. As a result, should children and young people residing within the affected area

secure places alongside their peers at Monmouth Comprehensive, they would not receive an entitlement to free home to school transport.

The proposals outlined would address this matter.

4. Background information

An analysis of parental requests made over the last 5 years show that the vast majority of children and young people attending Trellech Primary School opt to transition to either Monmouth Comprehensive School or Chepstow School. The table below provides the numbers transitioning to each of the secondary schools from Trellech Primary over the last 5 years.

	Transition to Monmouth Comprehensive	Transition to Chepstow School
September 2014	20	0
September 2015	23	0
September 2016	25	0
September 2017	21	3
September 2018	23	3
Total	112	6

The numbers within the above table show children and young people previously on roll at Trellech Primary School, and demonstrates that the majority of children seek admission into Monmouth Comprehensive School, with only a small number transitioning to the current catchment school of Chepstow School.

Over the last 3 years, three children have opted to attend Chepstow School from within the affected area.

Projected Numbers on roll

The table below identifies the number of children that are currently residing within the affected area and therefore those most likely to be affected by the proposed change. The numbers identify the children that will transition from Primary to Secondary school between September 2020 and September 2025.

Current NCY	Primary to Secondary transition	Number of Pupils Affected
Year 5	Sep-20	2
Year 4	Sep-21	0
Year 3	Sep-22	1
Year 2	Sep-23	1
Year 1	Sep-24	1
Rec	Sep-25	1
	Total	6

The Council's projected numbers on roll for Monmouth Comprehensive school support that the above children could be accommodated should the proposals be supported and agreed.

Pupils currently on roll at Chepstow School.

Children and Young People who are currently on roll at Chepstow School will not be affected by these proposals and existing home to school transport arrangements will remain in place until they are no longer attending the school.

5. Advantages and Disadvantages of the proposal

Advantages	Disadvantages
School catchment areas form part of the oversubscription criteria used to award school places. Children and young people from the affected area would gain an advantage in obtaining a school place at a Monmouth Comprehensive school should they form part of the catchment area.	Families residing within the affected area would be removed from the catchment area for Chepstow School should proposals be agreed. However, the Council forecasts that Chepstow School would have sufficient capacity to accommodate any parental requests from the affected area.
Enabling the above would support the robust transition links between Trellech Primary and Monmouth Comprehensive Schools, enabling peer groups to remain together on their transition to secondary school.	
Children and young people residing within the affected area would meet the criteria to receive free home to school transport to Monmouth Comprehensive School.	

Children residing within the affected area would still be able to obtain places at Chepstow School to accommodate any parental preference	
Children residing within the affected area would still be able to receive free home to school transport to Chepstow school in the event that's its determined to be the nearest school.	

6. Financial Implications

The aims of this proposal are not are not financially driven, but to reflect the transitional arrangements in place between primary and secondary schools. However, a full cost analysis looking at the financial impacts of the proposal will be undertaken alongside this consultation, paying particular attention to the impact on the Monmouthshire schools affected by the proposal, as well as the impact on home to school transport costs.

A full cost analysis will be presented to the Council's Cabinet alongside the views received as part of this consultation, to determine whether the proposal should be implemented.

7. What Next?

Your views on the proposed changes to secondary school catchment areas are important to us. We really do want you to engage in this consultation and tell us what you think of the proposals, particularly if they may affect you or your children.

Important: This consultation will not make any assumptions, so whether you are for or against the proposed changes, please take this opportunity to have your say

You can tell us what you think by:

- 1) Attending one of the consultation sessions:

Review Area	Date	Venue
Trellech and surrounding area	12 th February 2019 at 6pm	Trellech Primary School
All areas day time drop in session	14 th February 2019 9.30am to 11.30am	County Hall, Usk

- 2) Completing the online response form available via www.monmouthshire.gov.uk or
- 3) Contacting the Access Unit on 01633 644508, by emailing accesstolearning@monmouthshire.gov.uk or by post to @innovation House, Wales 1, Caldicot, NP26 9AN

Please note that the deadline for responses to this consultation is 1st March 2019 at 5pm. Any responses received by the local authority after this closing date will not be considered as part of this consultation.



Review Area 4 Llandogo Village & the Surrounding Areas

Consultation period:

18th January 2019 to 1st March 2019

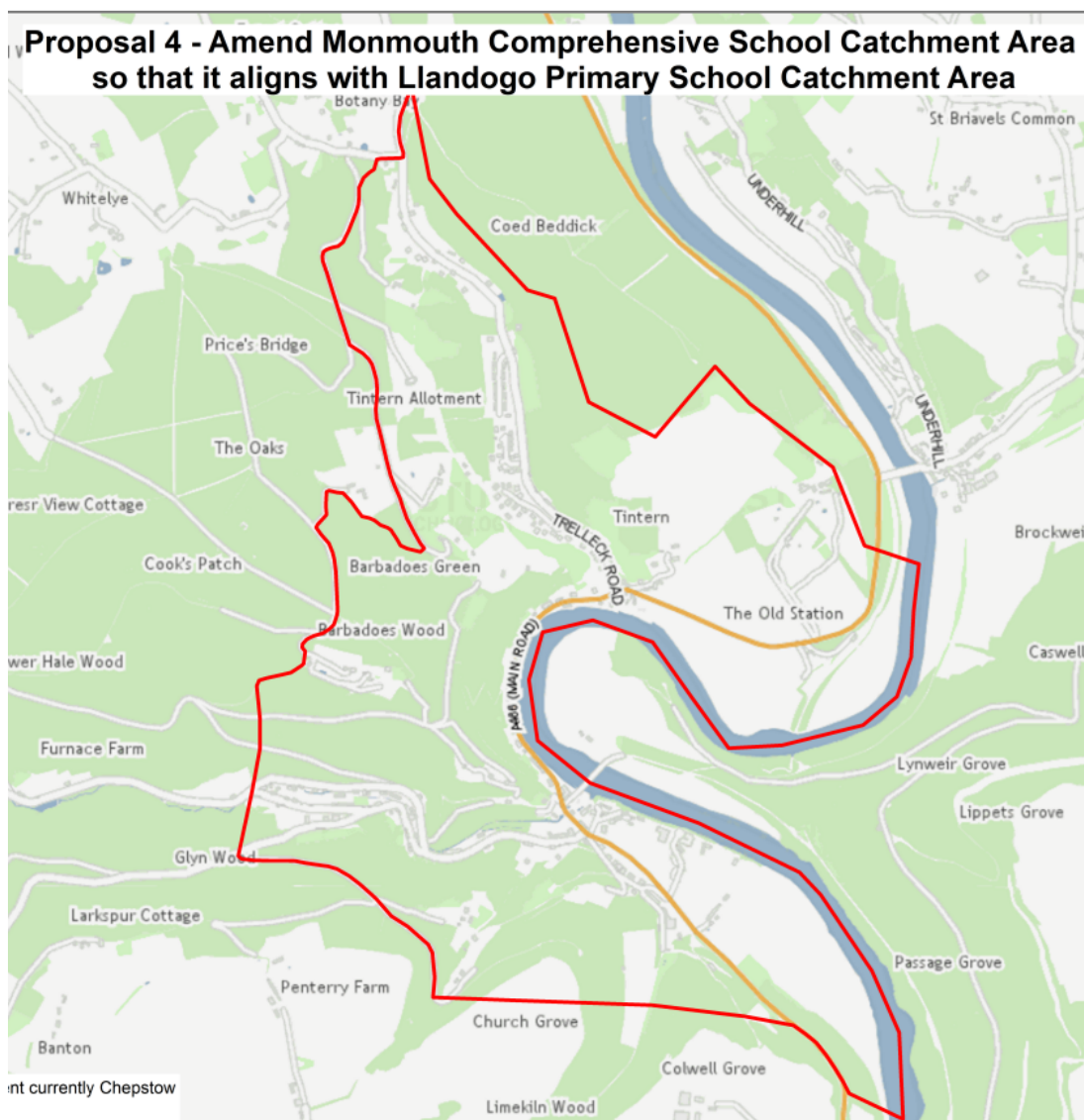
Contents

1. The Proposal	3
2. The current position	4
3. Why are we considering the proposed change?.....	6
4. Background information.....	7
5. Advantages and Disadvantages of the proposal	8
6. Financial Implications	9
6. What Next?	9

1. The Proposal

The Council are considering amending the secondary school catchment area for children and young people currently residing within the village of Llandogo and the immediate surrounding areas.

The areas identified currently form part of the catchment area for Llandogo Primary School, and Chepstow School. The map below illustrates the areas that are being considered under this proposal, and will help you to understand whether you could be affected by the proposed changes



The Council would like to know your views on whether the secondary school catchment boundary should be amended for the specified areas (area identified above), to form part of the catchment area for Monmouth Comprehensive School, thus aligning the entire catchment area for Llandogo Primary to a single secondary school.

Alternatively, the Council would like to know your views on whether the status quo should continue, i.e. Chepstow School remaining as the designated catchment school for the affected area.

The proposals would see the provision of free home to school transport offered to Monmouth Comprehensive School as the newly designated catchment school. School transport may also be offered to Chepstow School in the event that it is identified to be the nearest school.

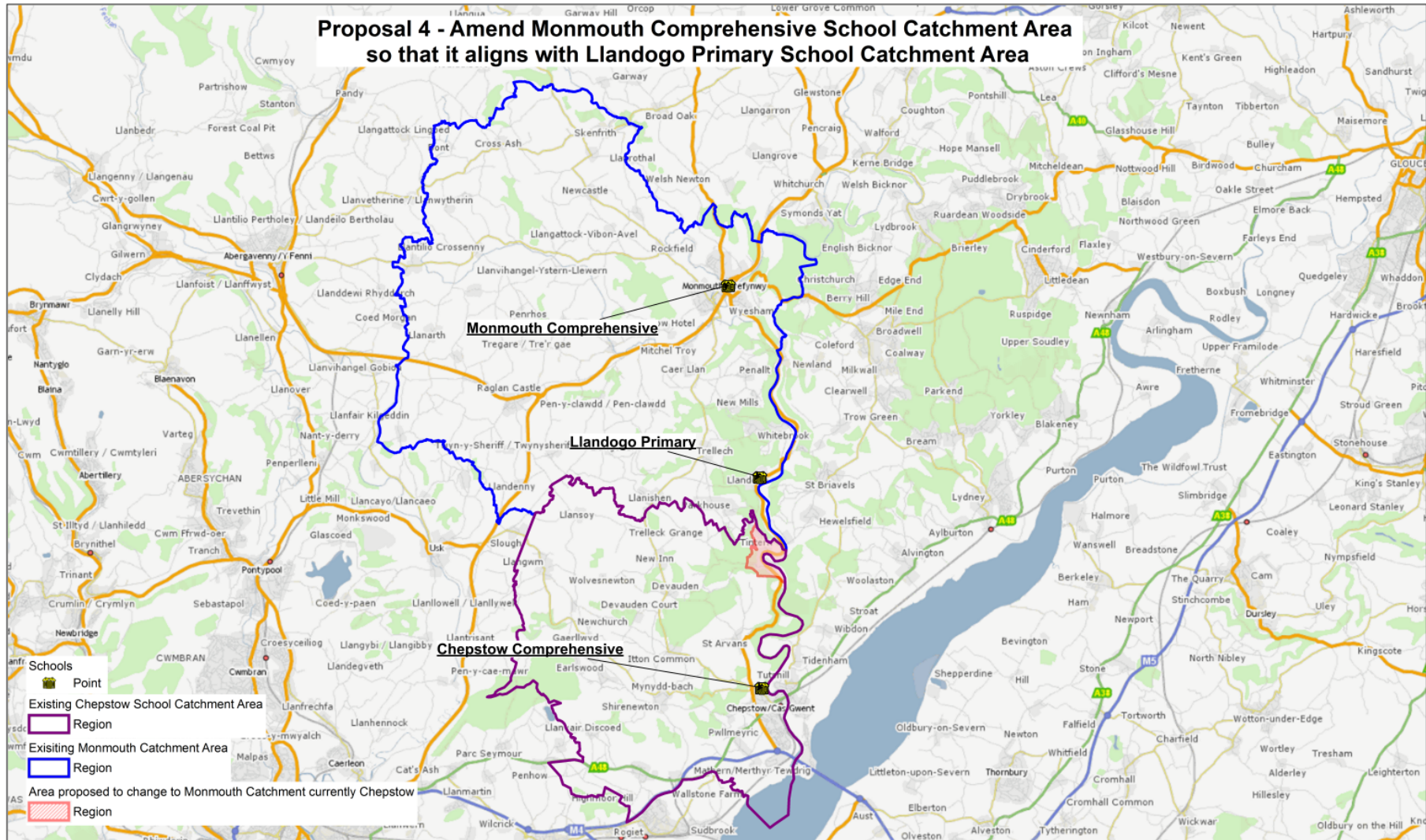
2. The current position

The area under review forms part of the catchment area for Llandogo Primary School. Llandogo Primary School is located in the county of Monmouthshire and is considered as a designated feeder school for Monmouth Comprehensive School, however, its catchment area serves more than 1 secondary school:

- **Monmouth Comprehensive School**. Forms the secondary catchment school for the majority of children and young people that reside within the Llandogo Primary catchment area.
- **Chepstow School**. Forms the secondary catchment school for the affected area and is also the nearest school in most instances for those residing within the affected area.

The map overleaf illustrates the current position, identifying how the area under review relates to existing secondary school catchment areas. For clarity, the shaded area of this map current forms part of the catchment area for Chepstow School, but is proposed to form part of Monmouth Comprehensive School.

Proposal 4 - Amend Monmouth Comprehensive School Catchment Area so that it aligns with Llandogo Primary School Catchment Area



3. Why are we considering the proposed change?

Transitional arrangements between Primary and Secondary School.

Llandogo Primary School is the designated primary school for the affected area and is a feeder school for Monmouth Comprehensive School. The proposed changes would see complete alignment between the catchment area for Llandogo Primary School and Monmouth Comprehensive school, lending support to the existing transitional arrangements, and enabling the cohorts of children to remain together when entering into that daunting transition between Primary to Secondary School.

Access to School places

The parents of children and young people currently residing within the affected area have the opportunity to express a preference for a school at which they wish for their child to attend. This preference does not need to be for the designated catchment school, however, children residing within the catchment area for a preferred school receive a priority in the event of oversubscription.

Those residing within the affected area are not afforded with the above priority for Monmouth Comprehensive school as they do not currently form part of the designated catchment area.

Llandogo Primary School, being a feeder for Monmouth Comprehensive School, sees almost all of the children and young people residing within its catchment area wishing to transition to Monmouth Comprehensive School. However, some children and young people from Llandogo Primary have been unsuccessful in securing places at Monmouth Comprehensive School during times of oversubscription. This is due to the affected area being outside of the catchment area for Monmouth Comprehensive School.

The above results in some children and young people not being able to transition to Monmouth Comprehensive school with their peer groups.

The proposals outlined would help in addressing this matter.

Provision of Home to School Transport

A further consideration of the proposed change is the current provision for home to school transport that currently serves the affected area. The council's current policy provides free home to school transport to the nearest or catchment school if residing 2 miles or more from the home address.

The affected area sees the availability of free home to school transport being available to Chepstow School as the nearest / catchment school for the affected

area. As a result, should children and young people residing within the affected area secure places alongside their peers at Monmouth Comprehensive, they would not receive an entitlement to free home to school transport.

The proposals outlined would address this matter.

4. Background information

An analysis of parental requests made over the last 5 years show that the vast majority of children and young people attending Llandogo Primary School opt to transition to either Monmouth Comprehensive School or Chepstow School. The table below provides the numbers transitioning to each of the secondary schools from Trellech Primary over the last 5 years.

	Transition to Monmouth Comprehensive	Transition to Chepstow School
September 2014	9	4
September 2015	8	2
September 2016	6	1
September 2017	5	1
September 2018	6	3
Total	34	11

The above table includes numbers of children and young people previously on roll at Llandogo Primary School, and demonstrates that the majority of children from seek admission into Monmouth Comprehensive School, with only a small number transitioning to the current catchment school of Chepstow School.

Over the last 3 years, there have been 5 children that have opted to attend Chepstow school from within the affected area.

Projected Numbers on roll

The table below identifies the number of children that are currently residing within the affected area and therefore those most likely to be affected by the proposed change. The numbers identify the children that will transition from Primary to Secondary school between September 2020 and September 2025.

Current NCY	Primary to Secondary transition	Number of Pupils Affected
Year 5	Sep-20	5
Year 4	Sep-21	7
Year 3	Sep-22	6
Year 2	Sep-23	7
Year 1	Sep-24	5

Rec	Sep-25	4
	Total	34

The Council's projected numbers on roll for Monmouth Comprehensive school support that the above children could be accommodated should the proposals be supported and agreed.

Pupils currently on roll at Chepstow School.

Children and Young People who are currently on roll at Chepstow School will not be affected by these proposals and existing home to school transport arrangements will remain in place until they are no longer attending the school.

5. Advantages and Disadvantages of the proposal

Advantages	Disadvantages
School catchment areas form part of the oversubscription criteria used to award school places. Children and young people from the affected area would gain an advantage in obtaining a school place at a Monmouth Comprehensive school should they form part of the catchment area.	Families residing within the affected area would be removed from the catchment area for Chepstow School should proposals be agreed. However, the Council forecasts that Chepstow School would have sufficient capacity to accommodate any parental requests from the affected area.
Enabling the above would support the robust transition links between Llandogo Primary and Monmouth Comprehensive Schools, enabling peer groups to remain together on their transition to secondary school.	
Children and young people residing within the affected area would meet the criteria to receive free home to school transport to Monmouth Comprehensive School.	
Children residing within the affected area would still be able to obtain places at Chepstow School to accommodate any parental preference	
Children residing within the affected area would still be able to receive free home to school transport to Chepstow school in the event that's its determined to be the nearest school.	

6. Financial Implications

The aims of this proposal are not are not financially driven, but to reflect the transitional arrangements in place between primary and secondary schools. However, a full cost analysis looking at the financial impacts of the proposal will be undertaken alongside this consultation, paying particular attention to the impact on the Monmouthshire schools affected by the proposal, as well as the impact on home to school transport costs.

A full cost analysis will be presented to the Council's Cabinet alongside the views received as part of this consultation, to determine whether the proposal should be implemented.

6. What Next?

Your views on the proposed changes to secondary school catchment areas are important to us. We really do want you to engage in this consultation and tell us what you think of the proposals, particularly if they may affect you or your children.

Important: This consultation will not make any assumptions, so whether you are for or against the proposed changes, please take this opportunity to have your say

You can tell us what you think by:

- 1) Attending one of the consultation sessions:

Review Area	Date	Venue
Llandogo and surrounding area	18 th February 2019 at 6pm	Llandogo Primary School
All areas day time drop in session	14 th February 2019 9.30am to 11.30am	County Hall, Usk

- 2) Completing the online response form available via www.monmouthshire.gov.uk or
- 3) Contacting the Access Unit on 01633 644508, by emailing accesstolearning@monmouthshire.gov.uk or by post to @innovation House, Wales 1, Caldicot, NP26 9AN

Please note that the deadline for responses to this consultation is 1st March 2019 at 5pm. Any responses received by the local authority after this closing date will not be considered as part of this consultation.